

The benefits of using AIS CBCT and i-CAT®

for the General Dentist

- The ability to select the most suitable implant size and type
- Achieve non-distorted and unmagnified measurements of the nerve canal height
- The ability to find buccal & lingual width
- Complete 3-D information to optimize treatment planning and placement for implant surgery
- Locate critical anatomy and determine if bone grafting or sinus lift is warranted
- Accurate 3-D views of impacted molars, impacted cuspids, and other supernumerary anomalies
- 3-D views of critical structures for complete TMJ analysis
- The ability to assess airways to determine appropriate treatment
- Anatomically accurate images of the mouth, face, and jaw to determine proper diagnosis
- Dentist can request a CBCT scan without specialist referral
- Friendly, helpful and knowledgeable AIS Radiographers

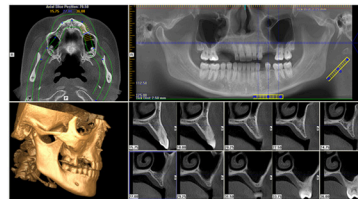
for the Orthodontist

i-CAT®'s Extended Field of View captures 17cm height x 23cm diameter in one single-rotation scan, making it ideal for cephalometric reconstruction. Orthodontists can create a complete orthodontic workup in just one scan, including Cephalometrics SMV Supernumerary Airway and Panoramic TM Joints Impactions Spinal

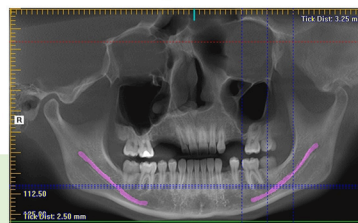
- Enables location of impacted canines and supernumeraries
- Ability to check for root resorption
- Determine the true reason for mandible position for Class II or overbite patients
- Accurate measurement of problems to determine proper diagnosis
- Distortion-free, 3-D views of critical anatomy surrounding the condyles

for Periodontists and Oral Surgeons

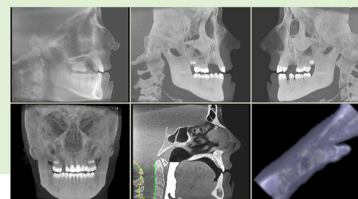
- Achieve nondistorted and unmagnified measurements of the nerve canal height
- The ability to find buccal & lingual width
- Measurable visual assistance to allow selection of the most suitable implant size and type
- Accurate images to allow choosing optimal locations and angulations for implant procedures
- Visualize impaction within the alveolar bone, location relative to adjacent teeth
- Visualize proximity to vital structures
- More accurate information resulting in less invasive surgery and decreased surgical time
- Diagnosis of bone morphology, joint space, and function for TMJ analysis
- High speed-scan for open jaw views
- Ability to locate critical anatomy
- A visual aid to help to determine if bone grafting or sinus lift is warranted



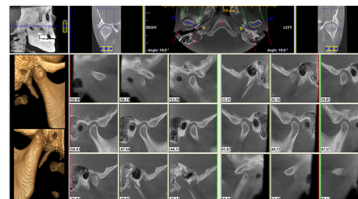
Implant view



Pan with nerve identification



Cephalometric view



TMJ view

Step by Step Guide to Using Advanced Imaging Services CBCT

1. Complete a AIS referral form

Available on-line from www.see-more.co.nz
or by contacting AIS (09) 522 7198

2. Make a booking for a Scan at AIS

contact AIS (09) 522 7198

For urgent scans patients can be sent without an appointment directly to AIS
139 Remuera Road,
Remuera, Auckland

Our Service

Advanced Imaging Services are completely independent and confidentiality of your patient is assured. AIS provide a range of dental imaging from Panoramic and Cephalometric images in print and digital format to 3-D computer tomographic (CT) images with slices of the areas of interest. DICOM data can be provided to facilitate the manufacturing of Biomodels and Implant Surgical Guides and for use with other 3rd party software.



Advanced Imaging Services